

# MONTHLY MEMBERSHIP PROGRESS REPORT

LOCATION AUSTRALIA

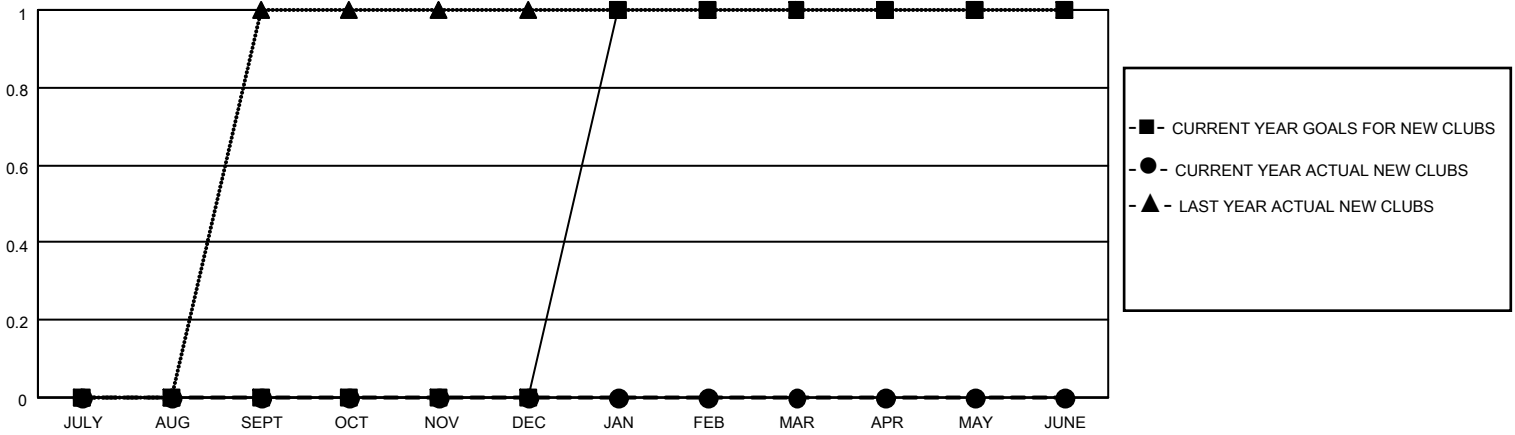
District 201V14

Results as of: 11/30/2020

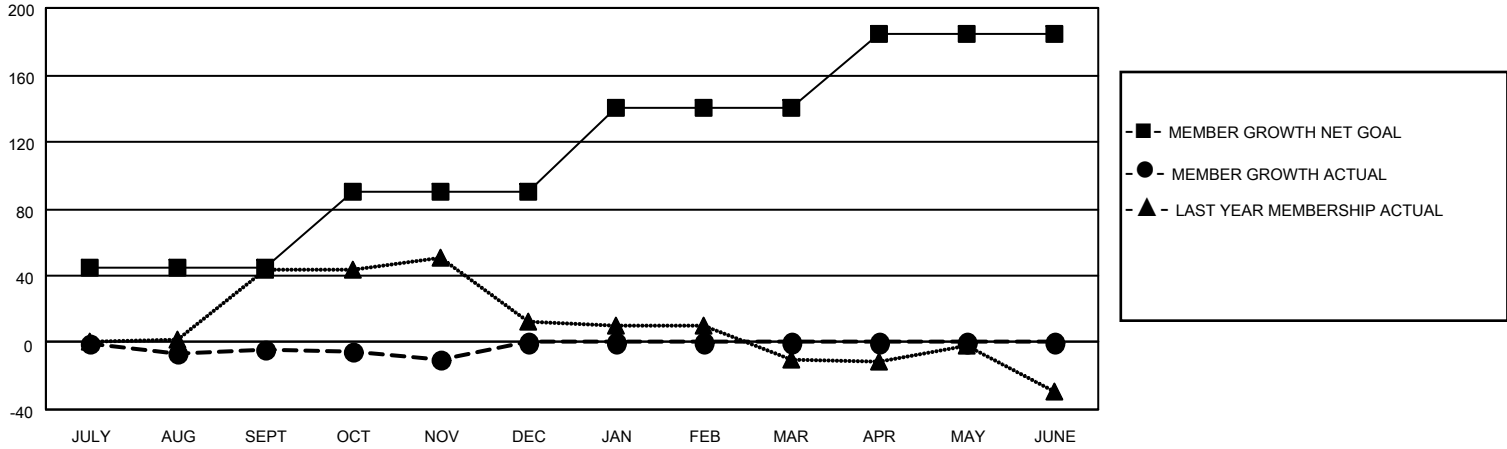
Clubs			
RESULTS FOR 2020-2021			
QUARTER	NEW CLUB GOAL	NEW CLUBS	DROPPED CLUBS
JULY/AUG/SEPT	0	0	1
OCT/NOV/DEC	0	0	0
JAN/FEB/MAR	1	0	0
APR/MAY/JUNE	0	0	0

Members			
RESULTS FOR 2020-2021			
QUARTER	MEMBER GROWTH NET GOAL	MEMBER GROWTH ACTUAL	DROPPED MEMBERS ACTUAL (including transfers)
JULY/AUG/SEPT	45	19	19
OCT/NOV/DEC	45	11	14
JAN/FEB/MAR	50	0	0
APR/MAY/JUNE	45	0	0

**GOALS AND ACTUAL NEW CLUBS CUMULATIVE**



**GOALS AND ACTUAL MEMBERS CUMULATIVE**



**DROPPED CLUBS: 1**

17 CLUBS OF 74 ADDED 1 OR MORE NEW MEMBERS

**GENDER DISTRIBUTION**

MALE 890 (70.13%)  
FEMALE 379 (29.87%)

**DROPPED MEMBERS**

DECEASED	4
CLUB CANCELLED	0
OTHER	29
<b>TOTAL</b>	<b>33</b>

[CLICK HERE FOR CUMULATIVE MEMBERSHIP DATA](#)

TOTAL FAMILY UNIT MEMBERS	136
FAMILY MEMBERS PAYING HALF DUES	69